

# EXERCISES



## A. Choose the correct answer.

1. An animal that does not eat plants, is  
(a) elephant (b) cow (c) goat (d) dog ✓
2. A fox is a  
(a) flesh-eater ✓ (b) plant-eater (c) both (a) and (b) (d) none of these
3. Insects like mosquito, butterfly or honey-bee eat their food with the help of  
(a) sharp front cutting teeth (b) long, pointed teeth  
(c) long, pointed sucking tubes ✓ (d) sticky tongues
4. The animal that does not chew the cud is  
(a) rabbit ✓ (b) cow (c) buffalo (d) goat
5. A pet animal among the following, is  
(a) giraffe (b) zebra (c) camel ✓ (d) wolf
6. A gnawing animal among the following, is  
(a) horse (b) cat (c) dog (d) squirrel ✓
7. A veterinary doctor treats sick  
(a) cow (b) dog (c) monkey (d) all of these ✓

## B. Answer the following questions.

1. How animals depend on plants ?
2. What do you mean by 'chewing the cud' ?
3. Which are flesh-eating animals ?
4. How does a snake eat its food ?
5. What is the use of trunk for an elephant ?
6. Name some domestic animals.

## C. Put the odd-one-out giving reason.

1. Cow, Zebra, Lion, Giraffe Ans. All the others are plant eating animals.
2. Jackal, Frog, Vulture, Bear Ans. All the others are flesh eating animals.
3. Rabbit, Snake, Squirrel, Rat Ans. All the others gnaw their food.
4. Goat, Mosquito, Butterfly, Honey-bee Ans. All the others suck their food.
5. Cow, Wolf, Horse, Dog Ans. All the others are domestic animals.



## QUICK ASSIGNMENT

### A. Tick (✓) the correct word and cross (x) the wrong one.

1. Bear / ~~cow~~ eats both plants and flesh of other animals.
2. Snake / leech sucks blood.
3. Rabbit / ~~fish~~ makes burrows.
4. Cow / ~~cat~~ chews the cud.
5. Vulture is a flesh-eating insect / ~~bird~~.

### B. Fill in the blanks with appropriate words given in the box.

mosquito earthworm live flesh-eating swallow

1. Animals need food to live.
2. Lion is a flesh-eating animal.
3. Snakes swallow their food.
4. The mosquito sucks the blood of animals.
5. An earthworm eats mud.

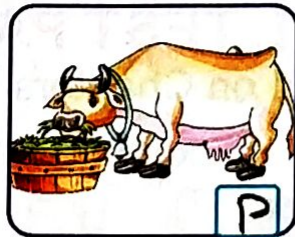
### C. Match the column A (structure of the mouth) with column B (animals).

Column A (Structure of mouth)	Column B (Animals)
1. Gnawing teeth	(a) elephant 3
2. Sucking tubes	(b) squirrel 1
3. Trunk	(c) giraffe 4
4. Long neck	(d) earthworm 5
5. Hole-like mouth	(e) mosquito 2

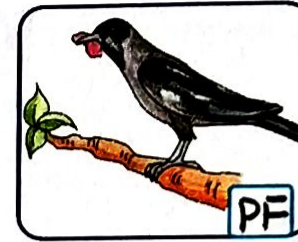
D. Look at the animals shown below. Write (P) for Plant-eaters, (F) for Flesh- eaters and (PF) for Plant and Flesh-eaters.



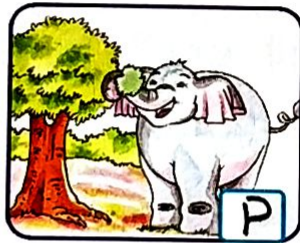
F



P



PF



P



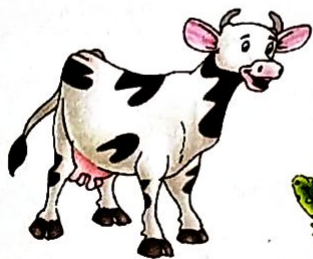
F



PF

### Animal search

Search the names of eight animals hidden in the following wordsearch. Take help from the pictures given below. Search them horizontally. One has been done for you.



B	I	T	U	Y	D	B	P	X	H
R	A	X	S	I	N	N	M	O	H
S	Q	U	I	R	R	E	L	D	H
B	E	A	R	W	D	C	K	M	O
E	L	E	P	H	A	N	T	J	W
B	A	S	J	K	U	F	O	X	J
B	U	T	T	E	R	F	L	Y	L
S	X	H	O	I	B	P	C	O	W
F	R	O	G	A	Z	N	E	N	G
I	V	S	N	A	K	E	I	N	K



# MODEL TEST PAPER-I

(Based on Chapters 1 to 3)

## Instructions

- Read the question paper carefully.
- Do not over write. Write neatly.

MM 20

### I. State True or False.

[4]

1. Plants get their food from animals. (False)
2. All living things need food to grow. (True)
3. Shoot grows above the soil. (True)
4. There is a baby plant inside the bud.

### II. Fill in the blanks with the help of words given in the box.

[4]

domestic photosynthesis gnaw trunk

1. Thick strong and woody stems of big trees are called trunk.
2. The process by which green plants make their food with the help of air, water and sunlight is called photosynthesis.
3. Animals like dog, hen, cat, cow are domestic animals.
4. Animals like rabbit and squirrel gnaw their food.






### III. Match the discription with the pictures.

[5]

#### Column A

1. A plant-eating animal
2. A domestic animal
3. A fruit with few seeds
4. A man-made non-living thing
5. An edible leave

#### Column B

- (a)  5
- (b)  3
- (c)  1
- (d)  2
- (e)  4

**IV. Unscramble the following words with the help of clues given below. [4]**

1. The part of plant that mostly converts into a fruit

R W F O E L

FLOWER



2. The kind of root in grass, rice or onion

I B S O R F U



FIBROUS

3. A beautiful flower that closes its petals at night

S T U O L

LOTUS



4. An animal that lives both in water and on land

G F O R



FROG

**V. Names of some plants, animals or things are hidden in the following word search. Read the clues and search the word horizontally or vertically. [3]**

1. A flesh-eating animal

2. A grass-eating animal

3. A fruit with many seeds

4. A natural non-living-thing

5. A man-made non-living thing

6. A very faithful pet animal

D	E	M	X	X	C	R	O	C	K
W	H	E	A	T	H	E	T	B	K
U	E	B	W	M	Q	Q	Q	S	L
H	L	A	G	P	A	P	A	Y	A
G	O	Q	R	N	A	H	D	W	M
O	Y	M	Z	O	V	B	C	D	L
S	L	F	E	S	D	D	H	O	R
I	Q	J	B	L	Y	L	A	G	R
O	X	W	R	H	S	L	I	O	N
E	A	Y	A	E	N	U	R	F	Z

